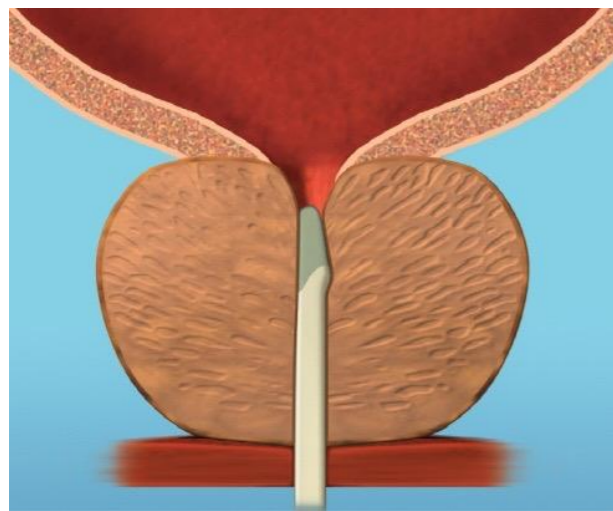
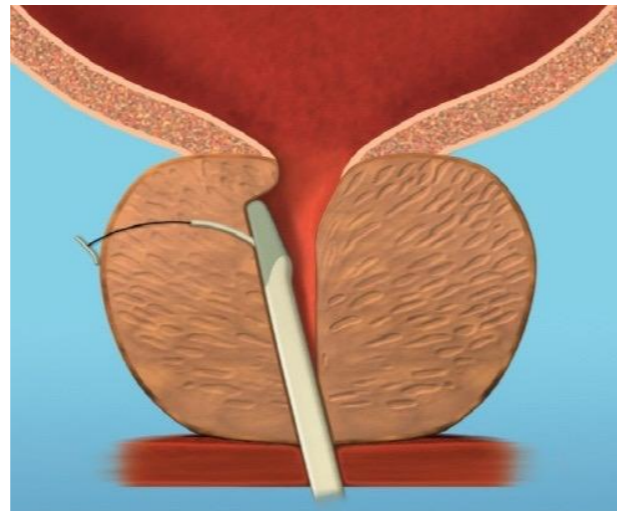


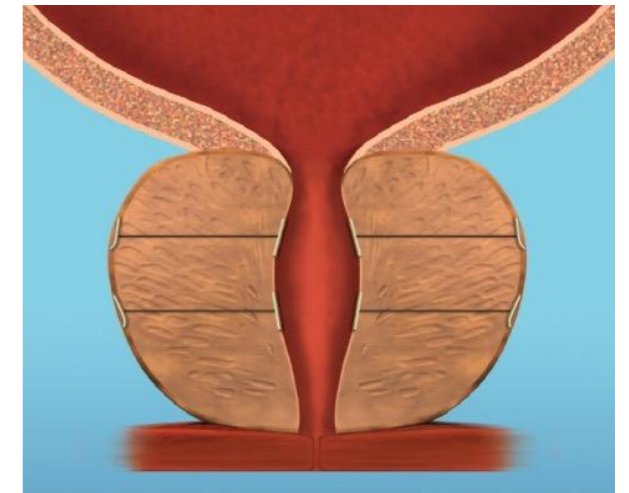
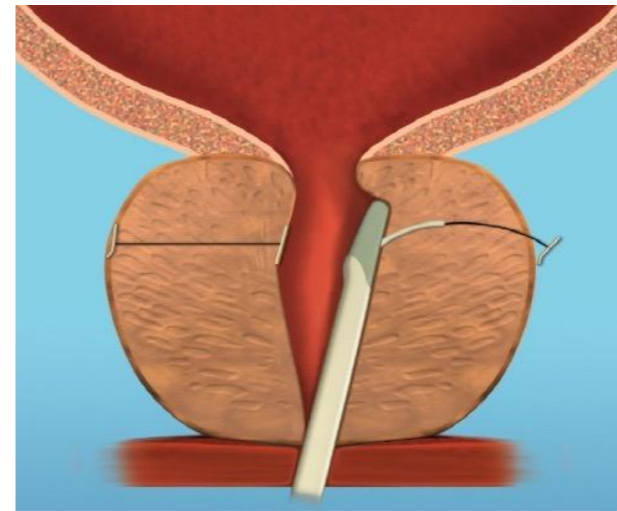
Introducing The UroLift[®] System Treatment



1. The UroLift delivery device is placed through the urethra to access the enlarged prostate.



2. UroLift implants are placed through a needle that comes out of the delivery device to lift the enlarged prostate tissue out of the way.

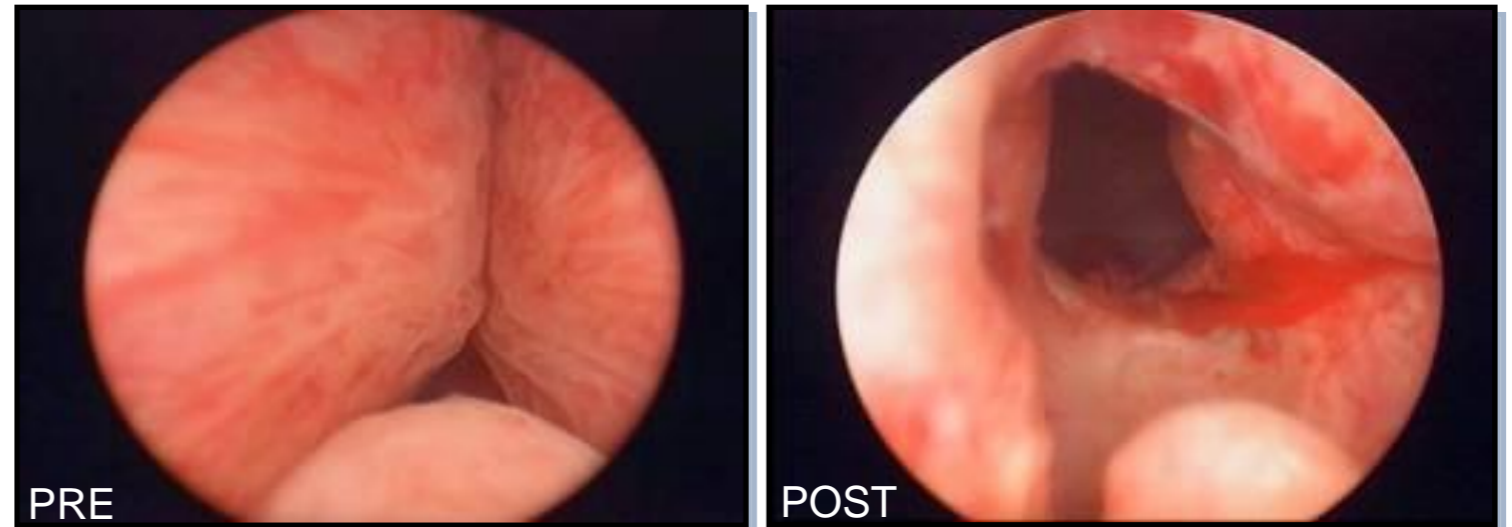


3. The UroLift delivery device is removed, leaving a more open urethra.

The UroLift[®] System directly opens the urethra without prostate tissue removal or ablation.

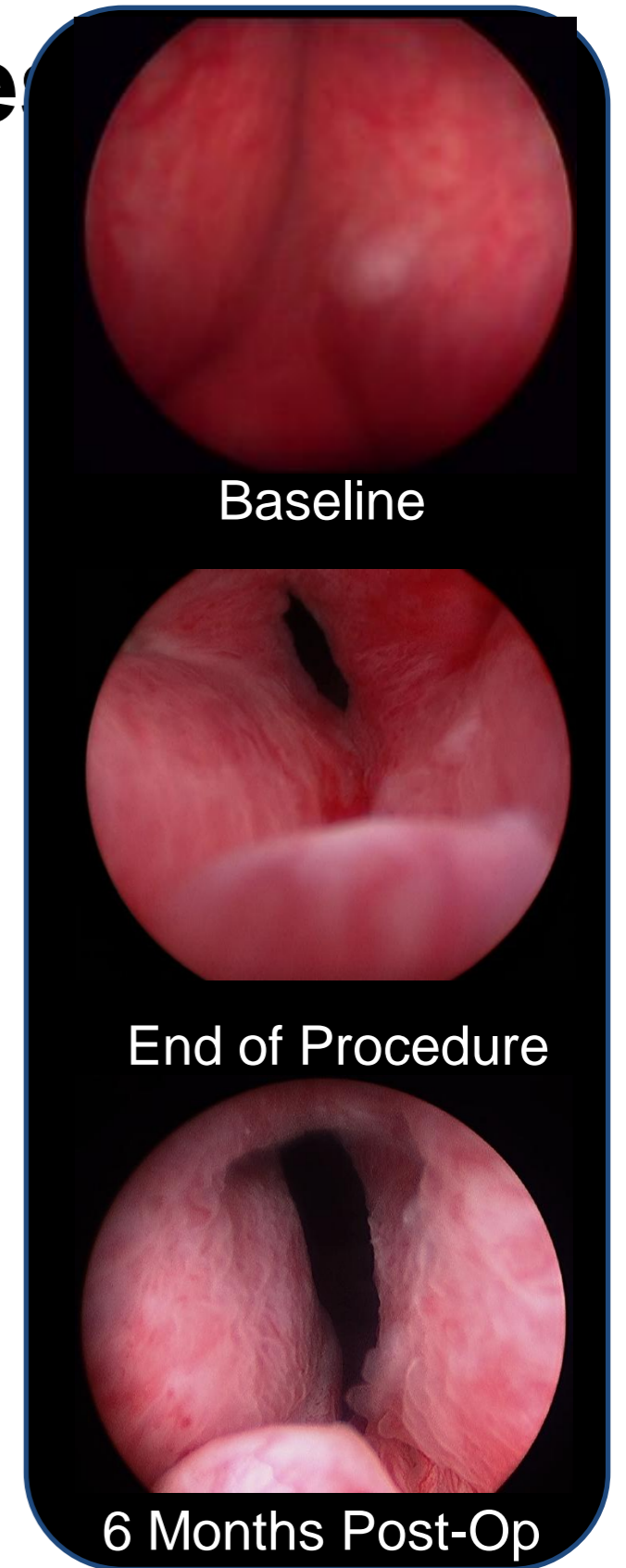
UroLift[®] System Is A Whole New Approach

- Immediately opens the prostatic urethra
- Can treat LUTS without compromising normal prostate function
- Provides rapid relief without complications from prostate injury
- Opens up a new option for urologists and patients



Encouraging Clinical Results

- Over 5000 patients, over 20,000 implants placed to date
- Straightforward procedure
 - Immediate, visible results
 - Can be performed in office or day surgery
 - Can be local anesthesia
 - 100% procedural success
- Safety confirmed
 - Adverse effects typical of rigid cystoscopic procedures typically resolve within 2 weeks
- Rapid symptom relief
 - Significant improvement by 2 weeks
- Preservation of sexual function
- Durable results
 - Follow-up out to 3 years, registry and follow-up ongoing
- Does not limit future therapies
 - UroLift® system re-treatment, TURP/Laser

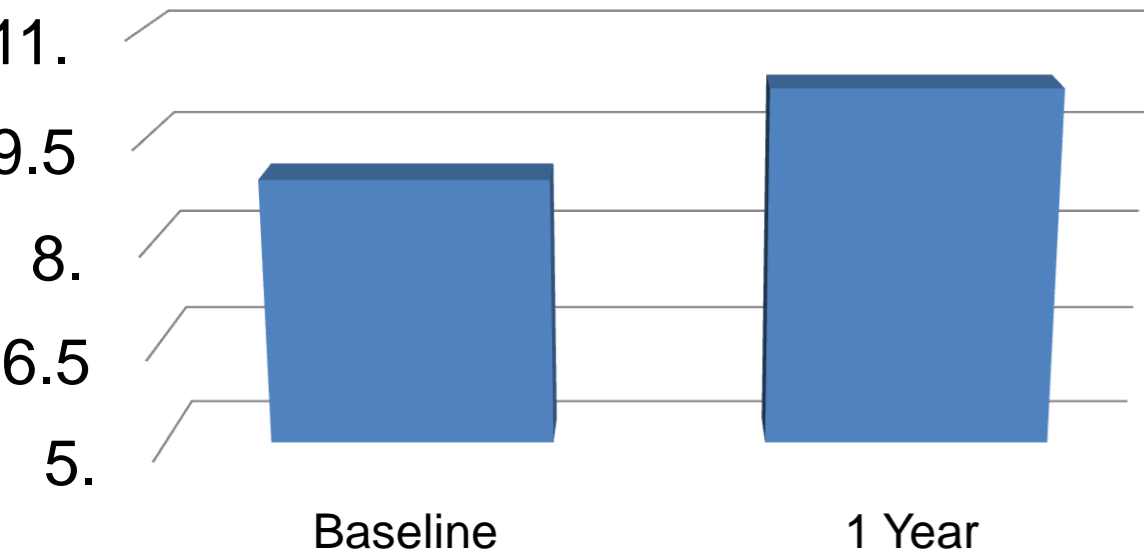


Sexual Function Preserved

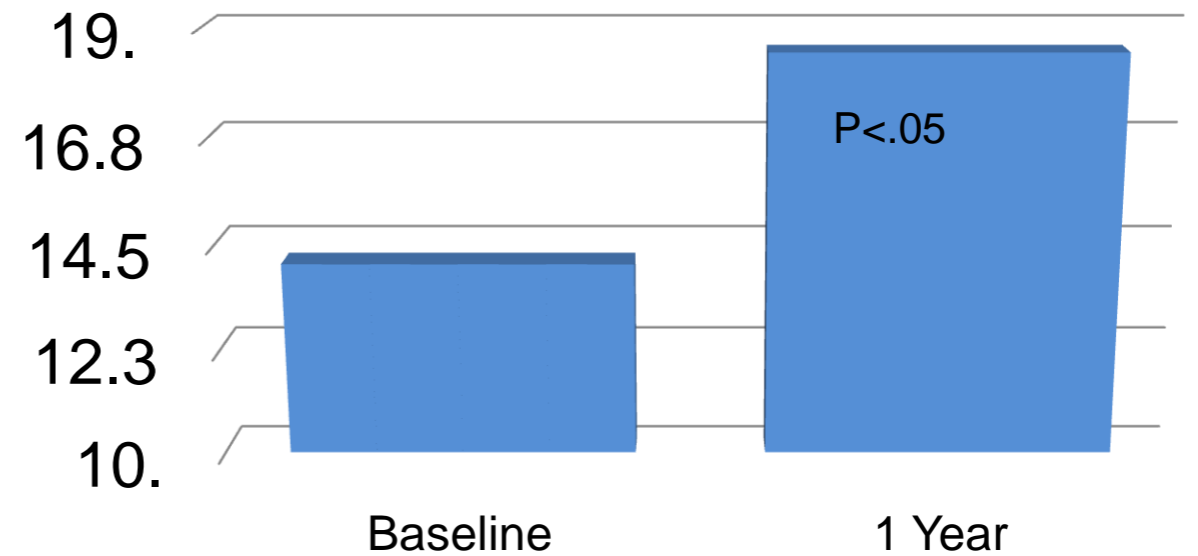
- Ejaculatory Function Preserved
 - 0% Retrograde Ejaculation

- Erectile Function Improved
 - 30% Statistical Improvement

MSHQ – Ejaculatory Function



IIEF – Erectile Function



* Data on file at NeoTract, Inc.

BPH is a Quality of Life Issue

What UroLift[®] Offers...

- Rapid relief within 2 weeks
- Durable results with data to 3 yrs
- Safe, minimally invasive
- Local anesthesia possible
- Outpatient or office procedure
- Preservation of sexual function
- Improvement in Quality of Life



...Is What Patients Want

*Data on file at NeoTract, Inc.

Who is the UroLift® Patient?

- Candidates for TURP or Laser who...
 - Want to preserve sexual function
 - Are concerned about complications
 - Want a more rapid return to daily life
 - Have no median lobe
- Men unhappy with BPH drugs who...
 - Are concerned about surgery
 - Are seeking a less invasive solution
 - Want to preserve sexual function

UroLift[®] System Treatment Summary

- A Quality of Life solution for BPH patients
 - Minimally invasive, minimal side effects
 - Rapid, durable improvement
 - Preserves sexual function
- Opens up a new approach
 - Immediately opens the prostatic urethra
 - No prostate tissue removal or ablation
- Best first candidates for UroLift system treatment
 - TURP/Laser candidates concerned about risks of surgery and want to preserve sexual function.
 - Men unhappy with BPH drugs and want a low risk solution.
 - Target 60g or smaller prostates, no median lobe